

***One Up Offroad***  
One Up Step™ Installation

INTRODUCING THE NEW PATENT PENDING

***One Up Step***™.

An innovative original new product from One Up Offroad. The One Up Steps mount in the factory location and provide a cleaner more protective step then original equipment tube or plastic steps. Design to disappear more then get noticed we Powder Coat them with black texture for a long lasting finish. Your unfinished pinch weld is fully covered by heavy gauge steel that is laser cut and CNC formed. These quality steps will take the abuse before your cab is damaged. A Patent Pending Design.



# ***One Up Offroad***

## One Up Step™ Installation

The biggest hassle of having a lifted truck higher than 8" is getting other people in the truck. A single step is not going to do the job you need more. We designed this step with more in mind. The Angles of the step deceive the eye. This allows mounting of the AMP Research Power Step fully hidden behind the One Up Step. This moves the AMP Step 6 1/2" below the pinch weld. Instead of one step you now have two.



# ***One Up Offroad***

## One Up Step™ Installation

### **Instructions Part 1**

**Notes:** The steps are the same for the right and the left and are designed to fit the trucks with or without Bushwacker Cutout fender flairs.



### **Step 1: Tear it apart**

Remove factory running board, **save all hardware to reuse**

If your truck is not black you should take the time now to paint the pinch weld area with a coat of undercoating to make a cleaner install. Behind the front fender is the most noticeable. Take your time taping and painting so it looks nice when you are done.



# ***One Up Offroad***

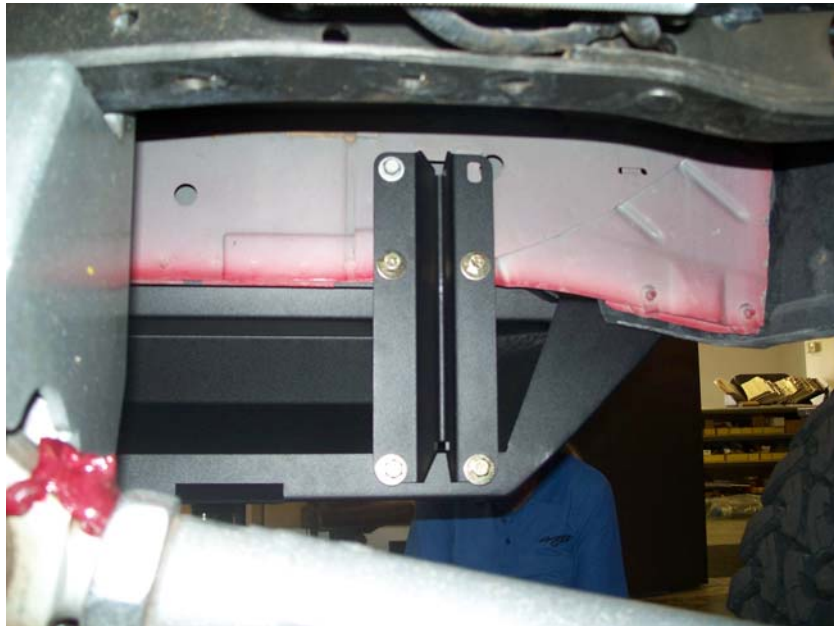
## One Up Step™ Installation

### **Step 2: Relocate factory fasteners**

Carefully remove factory nut clips from lower pinch weld and reinstall the nut clips in the top holes so both top holes in 5 locations have nut clips in them.



The truck may only have enough nut clips to put one on some mounts, that's OK the factory only runs one on the top. Do your best to make it look Correct.

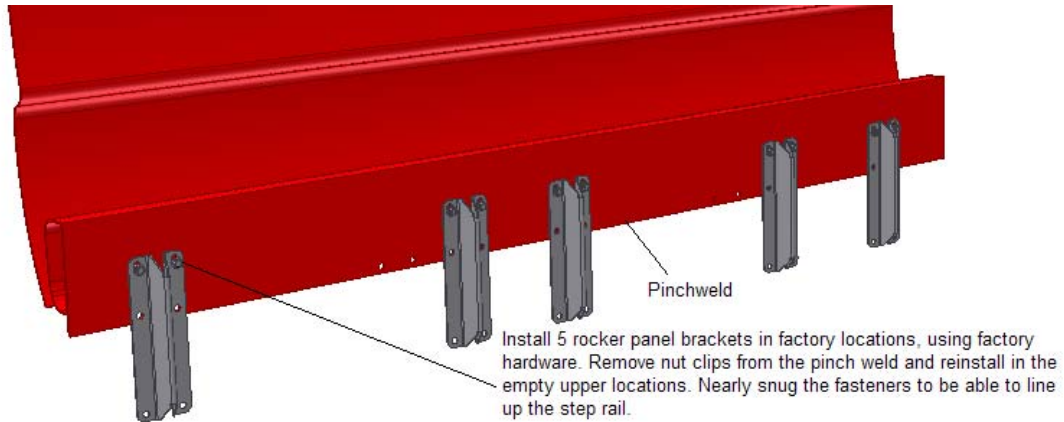


# *One Up Offroad*

## One Up Step™ Installation

### Step 3: Install Rocker Panel Brackets

Install the 5 rocker panel brackets with the factory hardware in the top two holes only. Leave the bolts close to snug but not binding, do not tighten them yet, turn them in the nut clips for many turns but not until the head of the bolt hits the rocker panel brackets. They need to be moveable to align the step rail.

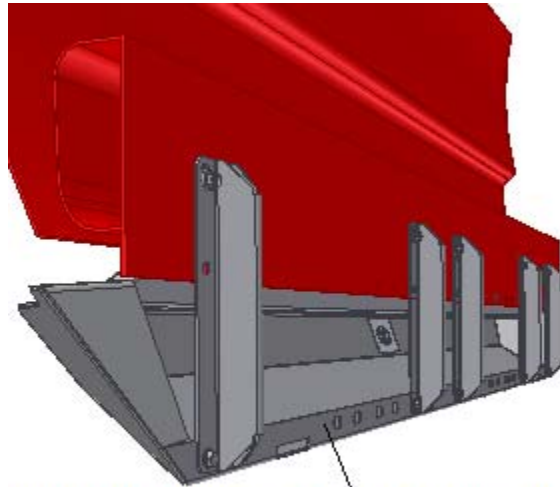


# ***One Up Offroad***

## One Up Step™ Installation

### **Step 4: Put the step on the truck**

Install the One Up Step with the supplied 3/8 fasteners in a couple of the bottom holes of the rocker panel bracket only. Use a washer on both the bolt head side and the nut side of the parts. Leave the bolts close to snug but not binding, do not tighten them yet. They need to be moveable to align the step rail.



Install step rail to rocker panel bracket starting with bottom 3/8" hardware. Nearly snug, to be able to set position and level to truck.



# ***One Up Offroad***

## One Up Step™ Installation

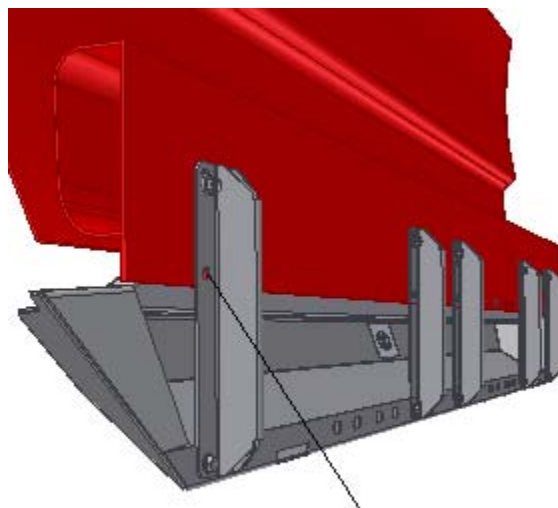
### **Step 5: Alignment**

There is 3/8" of adjustment in the placement of the step rail front to rear on the truck. Look at the step rail from the side of the truck to determine the distance of the end of the step rail to the end of the cab front & rear. Since you left the bolts close to snug you can shift the step rail a little one way or another to make it fit just right. After the step rail is in position, snug up a few of the fasteners to lock the front to back, up and down, & level position.



### **Step 6: Drill it**

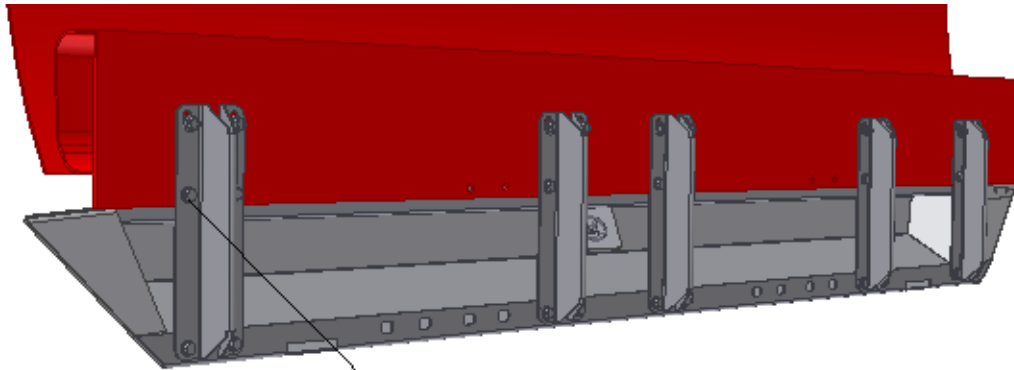
Install 3/8" hardware in pinch weld holes that are available and line up with step brackets if any of the holes don't line up, or are not there use the hole in the step bracket as a guide to drill the holes in the pinch weld. We want as many bolt in the brackets as possible because of the leverage the amp step will put on the brackets.



Drill 3/8" Holes thru the pinch weld using the  
↕ bracket as a guide

***One Up Offroad***  
One Up Step™ Installation

**Step 7: Tighten it up**



Install & Tighten 3/8-16 x 1" Fasteners

Tighten all 3/8-16 fasteners to 35 ft lbs of torque. Tighten all Factory fasteners to 20 ft lbs of torque. At this point the Step Rail should be in the final position, solid and tight.



# ***One Up Offroad***

## One Up Step™ Installation

### **Step 8: Finishing touch**

Install filler at the rear of the cab to fill light gap and provide a finished look. Position is not locked down so place it where it looks the best to you on your truck, mark and pre-drill the holes then install the self-tapping screws thru the Filler plate into the step.



The One Up Step install is finished.  
If you are installing Power Steps continue to Part 2